



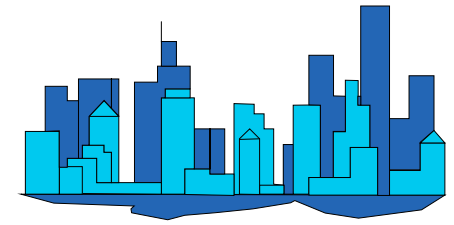
# City of Phoenix

## Monthly Count Of Actual Offenses Known To Police

### Part 1 Crimes

#### By Uniform Crime Reporting (UCR) Classifications

#### 2021 Calendar Year



	JAN	FEB	MAR	1st QTR TOTAL	APR	MAY	JUN	2nd QTR TOTAL	JUL	AUG	SEP	3rd QTR TOTAL	OCT	NOV	DEC	4th QTR TOTAL	2021 TOTAL
Criminal Homicide	13	19	11	43	15	18	14	47	22	22	14	58	18	14	18	50	198
a. Murder and Non-Negligent Manslaughter	13	19	11	43	14	18	13	45	21	22	14	57	18	14	18	50	195
b. Manslaughter by Negligence	0	0	0	0	1	0	1	2	1	0	0	1	0	0	0	0	3
Total Rape	76	88	95	259	89	93	84	266	93	100	98	291	101	93	77	271	1,087
a. Rape	75	86	91	252	82	87	76	245	81	92	88	261	95	89	74	258	1,016
b. Attempts to commit rape	1	2	4	7	7	6	8	21	12	8	10	30	6	4	3	13	71
Robbery	330	265	274	869	214	241	267	722	285	282	261	828	267	263	234	764	3,183
a. Firearm	116	80	93	289	65	77	89	231	96	91	81	268	93	100	89	282	1,070
b. Knife or Cutting Instrument	45	24	24	93	19	31	34	84	25	42	41	108	40	38	32	110	395
c. Other Dangerous Weapon	34	38	38	110	23	25	30	78	41	38	23	102	32	30	24	86	376
d. Strong-Arm (hands, fists, feet, etc.)	135	123	119	377	107	108	114	329	123	111	116	350	102	95	89	286	1,342
Aggravated Assault	672	659	685	2,016	743	820	805	2,368	848	787	691	2,326	703	642	602	1,947	8,657
<b>Total Violent Crimes</b>	<b>1,091</b>	<b>1,031</b>	<b>1,065</b>	<b>3,187</b>	<b>1,061</b>	<b>1,172</b>	<b>1,170</b>	<b>3,403</b>	<b>1,248</b>	<b>1,191</b>	<b>1,064</b>	<b>3,503</b>	<b>1,089</b>	<b>1,012</b>	<b>931</b>	<b>3,032</b>	<b>13,125</b>
Burglary	585	550	568	1,703	500	468	472	1,440	535	584	520	1,639	527	479	501	1,507	6,289
a. Forcible Entry	380	322	354	1,056	310	288	316	914	340	370	295	1,005	336	303	323	962	3,937
b. Unlawful Entry - No Force	173	192	181	546	164	155	128	447	159	175	183	517	161	137	128	426	1,936
c. Attempted Forcible Entry	32	36	33	101	26	25	28	79	36	39	42	117	30	39	50	119	416
Larceny - Theft	3,270	3,267	3,280	9,817	2,564	2,767	2,751	8,082	2,942	3,104	3,169	9,215	3,157	3,200	3,197	9,554	36,668
Motor Vehicle Theft	627	623	638	1,888	564	641	671	1,876	650	687	745	2,082	692	677	675	2,044	7,890
a. Autos	383	408	392	1,183	341	418	443	1,202	431	436	482	1,349	434	409	415	1,258	4,992
b. Trucks and Buses	192	159	182	533	152	146	181	479	165	197	194	556	189	203	199	591	2,159
c. Other Vehicles	52	56	64	172	71	77	47	195	54	54	69	177	69	65	61	195	739
Arson	30	26	24	80	31	21	22	74	11	16	15	42	28	13	11	52	248
<b>Total Property Crimes</b>	<b>4,512</b>	<b>4,466</b>	<b>4,510</b>	<b>13,488</b>	<b>3,659</b>	<b>3,897</b>	<b>3,916</b>	<b>11,472</b>	<b>4,138</b>	<b>4,391</b>	<b>4,449</b>	<b>12,978</b>	<b>4,404</b>	<b>4,369</b>	<b>4,384</b>	<b>13,157</b>	<b>51,095</b>
<b>TOTAL PART 1 CRIMES</b>	<b>5,603</b>	<b>5,497</b>	<b>5,575</b>	<b>16,675</b>	<b>4,720</b>	<b>5,069</b>	<b>5,086</b>	<b>14,875</b>	<b>5,386</b>	<b>5,582</b>	<b>5,513</b>	<b>16,481</b>	<b>5,493</b>	<b>5,381</b>	<b>5,315</b>	<b>16,189</b>	<b>64,220</b>

Motorcycles are now being grouped with "Other Vehicles" starting October 2015.

Does not include "Unfounded" cases by UCR definition.