



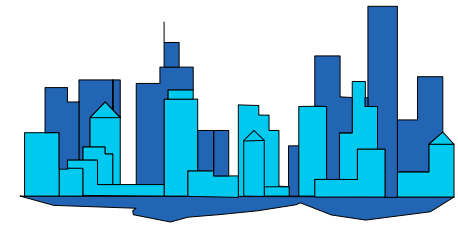
City of Phoenix

Monthly Count Of Actual Offenses Known To Police

Part 1 Crimes

By Uniform Crime Reporting (UCR) Classifications

2010 Calendar Year-To-Date



	JAN	FEB	MAR	1st QTR TOTAL	APR	MAY	JUN	2nd QTR TOTAL	JUL	AUG	SEP	3rd QTR TOTAL	OCT	NOV	DEC	4th QTR TOTAL	2010 YEAR TO DATE TOTAL
	Criminal Homicide	9	9	8	26	10	9	0	19	0	0	0	0	0	0	0	0
a. Murder and Non-Negligent Manslaughter	9	9	8	26	10	9	0	19	0	0	0	0	0	0	0	0	45
b. Manslaughter by Negligence	0	0	0	0	0	0	0	0	0	0	0	0	0	0	0	0	0
Forcible Rape	35	38	46	119	42	46	0	88	0	0	0	0	0	0	0	0	207
a. Rape by Force	32	36	41	109	36	37	0	73	0	0	0	0	0	0	0	0	182
b. Attempts to Commit Forcible Rape	3	2	5	10	6	9	0	15	0	0	0	0	0	0	0	0	25
Robbery	269	230	227	726	279	261	0	540	0	0	0	0	0	0	0	0	1,266
a. Firearm	128	106	107	341	136	121	0	257	0	0	0	0	0	0	0	0	598
b. Knife or Cutting Instrument	24	24	28	76	21	30	0	51	0	0	0	0	0	0	0	0	127
c. Other Dangerous Weapon	18	16	17	51	16	16	0	32	0	0	0	0	0	0	0	0	83
d. Strong-Arm (hands, fists, feet, etc.)	99	84	75	258	106	94	0	200	0	0	0	0	0	0	0	0	458
Aggravated Assault	368	278	326	972	348	402	0	750	0	0	0	0	0	0	0	0	1,722
Total Violent Crimes	681	555	607	1,843	679	718	0	1,397	0	0	0	0	0	0	0	0	3,240
Burglary	1,381	991	1,178	3,550	1,276	1,332	0	2,608	0	0	0	0	0	0	0	0	6,158
a. Forcible Entry	895	591	731	2,217	833	833	0	1,666	0	0	0	0	0	0	0	0	3,883
b. Unlawful Entry - No Force	422	338	391	1,151	387	425	0	812	0	0	0	0	0	0	0	0	1,963
c. Attempted Forcible Entry	64	62	56	182	56	74	0	130	0	0	0	0	0	0	0	0	312
Larceny - Theft	3,250	2,922	3,291	9,463	3,259	3,245	0	6,504	0	0	0	0	0	0	0	0	15,967
Motor Vehicle Theft	694	622	701	2,017	586	629	0	1,215	0	0	0	0	0	0	0	0	3,232
a. Autos	358	316	325	999	278	315	0	593	0	0	0	0	0	0	0	0	1,592
b. Trucks and Buses	301	283	339	923	277	281	0	558	0	0	0	0	0	0	0	0	1,481
c. Other Vehicles	19	9	12	40	6	11	0	17	0	0	0	0	0	0	0	0	57
d. Motorcycles	16	14	25	55	25	22	0	47	0	0	0	0	0	0	0	0	102
Arson	25	28	23	76	28	31	0	59	0	0	0	0	0	0	0	0	135
Total Property Crimes	5,350	4,563	5,193	15,106	5,149	5,237	0	10,386	0	0	0	0	0	0	0	0	25,492
TOTAL PART 1 CRIMES	6,031	5,118	5,800	16,949	5,828	5,955	0	11,783	0	0	0	0	0	0	0	0	28,732

Does not include "Unfounded" cases by UCR definition.

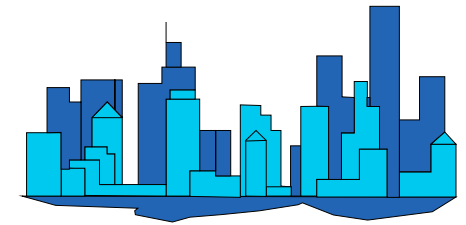


City of Phoenix

Monthly Count Of Actual Offenses Known To Police

Part 2 Crimes

By Uniform Crime Reporting (UCR) Classifications
2010 Calendar Year-To-Date



	JAN	FEB	MAR	1st QTR TOTAL	APR	MAY	JUN	2nd QTR TOTAL	JUL	AUG	SEP	3rd QTR TOTAL	OCT	NOV	DEC	4th QTR TOTAL	2010 YEAR TO DATE TOTAL
Forgery & Counterfeit*	235	216	207	658	223	178	0	401	0	0	0	0	0	0	0	0	1,059
Fraud	576	580	701	1,857	695	606	0	1,301	0	0	0	0	0	0	0	0	3,158
Embezzlement	44	30	29	103	33	36	0	69	0	0	0	0	0	0	0	0	172
Stolen Property	52	35	52	139	36	59	0	95	0	0	0	0	0	0	0	0	234
Vandalism	1,081	972	1,249	3,302	1,049	1,240	0	2,289	0	0	0	0	0	0	0	0	5,591
Weapons	77	76	79	232	91	78	0	169	0	0	0	0	0	0	0	0	401
Commercialized Vice	54	77	43	174	50	63	0	113	0	0	0	0	0	0	0	0	287
Sex Offenses	99	137	169	405	147	152	0	299	0	0	0	0	0	0	0	0	704
Narcotic Drug Laws	669	712	730	2,111	707	633	0	1,340	0	0	0	0	0	0	0	0	3,451
Opium	150	143	169	462	174	163	0	337	0	0	0	0	0	0	0	0	799
Marijuana	358	408	390	1,156	382	320	0	702	0	0	0	0	0	0	0	0	1,858
Synthetics	148	147	153	448	136	134	0	270	0	0	0	0	0	0	0	0	718
Non-Narcotics	13	14	18	45	15	16	0	31	0	0	0	0	0	0	0	0	76
Gambling	0	0	0	0	0	0	0	0	0	0	0	0	0	0	0	0	0
Bookmaking	0	0	0	0	0	0	0	0	0	0	0	0	0	0	0	0	0
Lottery	0	0	0	0	0	0	0	0	0	0	0	0	0	0	0	0	0
Other Gambling	0	0	0	0	0	0	0	0	0	0	0	0	0	0	0	0	0
Offenses Against Family	36	30	49	115	45	52	0	97	0	0	0	0	0	0	0	0	212
Driving Under Influence*	597	571	668	1,836	599	610	0	1,209	0	0	0	0	0	0	0	0	3,045
Liquor Laws	118	159	163	440	155	195	0	350	0	0	0	0	0	0	0	0	790
Disorderly Conduct	355	380	348	1,083	376	383	0	759	0	0	0	0	0	0	0	0	1,842
Vagrancy	2	3	18	23	37	33	0	70	0	0	0	0	0	0	0	0	93
Other (Except Traffic)	612	581	674	1,867	659	671	0	1,330	0	0	0	0	0	0	0	0	3,197
All Traffic	177	189	184	550	199	185	0	384	0	0	0	0	0	0	0	0	934
Curfew	17	12	24	53	19	23	0	42	0	0	0	0	0	0	0	0	95
Runaways	323	315	341	979	366	370	0	736	0	0	0	0	0	0	0	0	1,715
Misdemeanor Assaults	961	978	1,081	3,020	1,196	1,250	0	2,446	0	0	0	0	0	0	0	0	5,466
TOTAL PART 2 CRIMES	6,085	6,053	6,809	18,947	6,682	6,817	0	13,499	0	0	0	0	0	0	0	0	32,446

Does not include "Unfounded" cases by UCR definition.